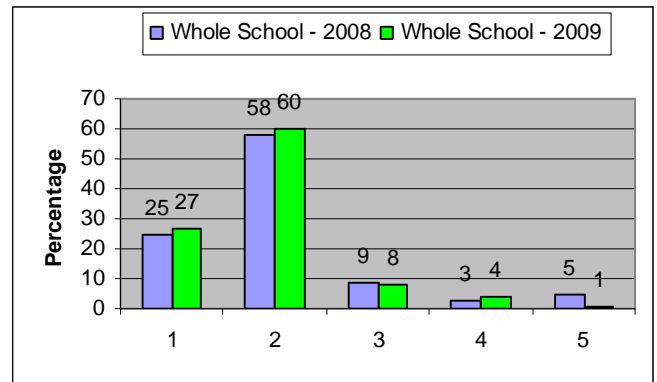


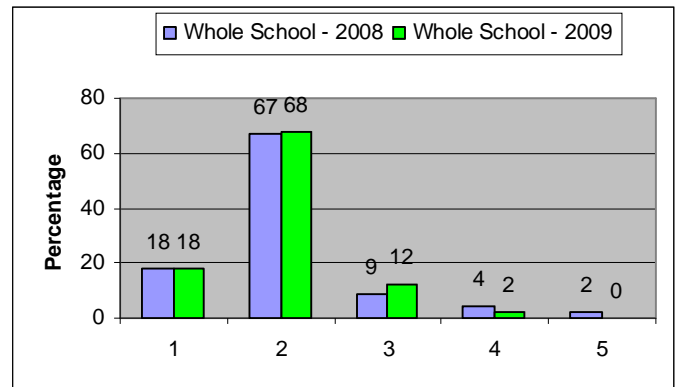
My daughter enjoys school

2008—92% of parents answered 3 or above
2009—95% of parents answered 3 or above



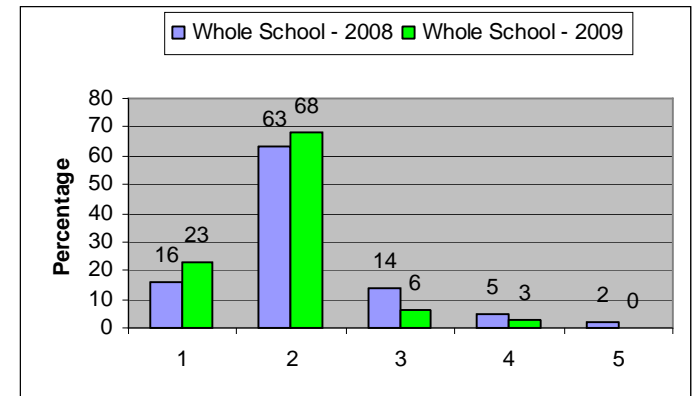
There is a pleasant and safe environment at Glenmoor School

2008—94% of parents answered 3 or above
2009—98% of parents answered 3 or above



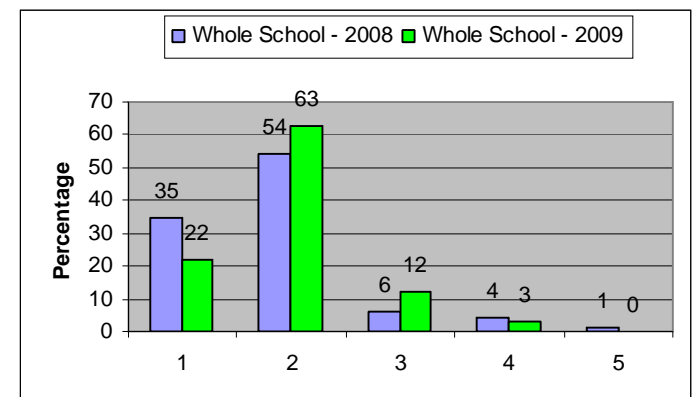
Glenmoor School provides a positive learning environment

2008—83% of parents answered 3 or above
2009—97% of parents answered 3 or above



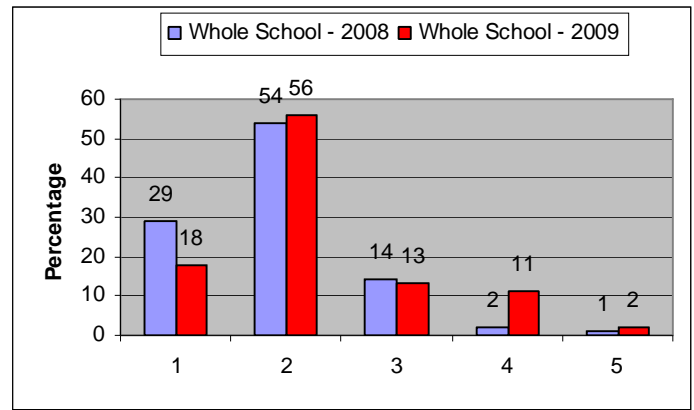
My daughter is generally making good progress

2008—95% of parents answered 3 or above
2009—97% of parents answered 3 or above



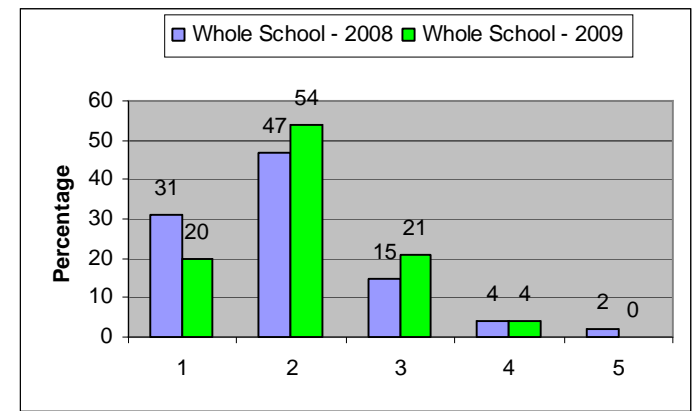
My daughter knows her own personal targets

2008—97% of parents answered 3 or above
2009—87% of parents answered 3 or above



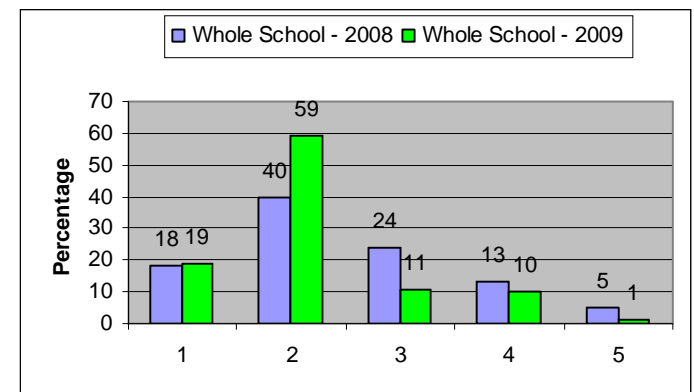
My daughter is encouraged to reach her maximum potential

2008—93% of parents answered 3 or above
2009—95% of parents answered 3 or above



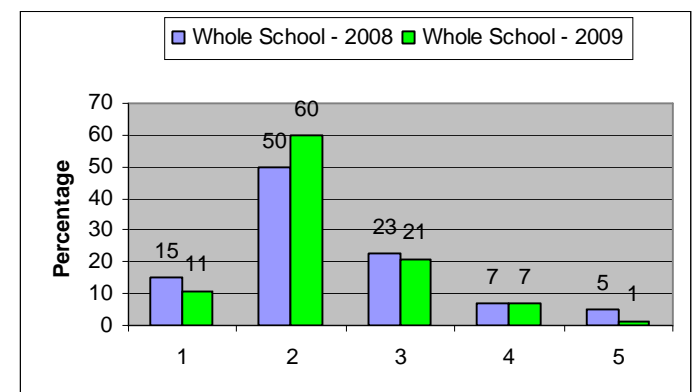
Appropriate homework is regularly set and marked

2008—82% of parents answered 3 or above
2009—89% of parents answered 3 or above



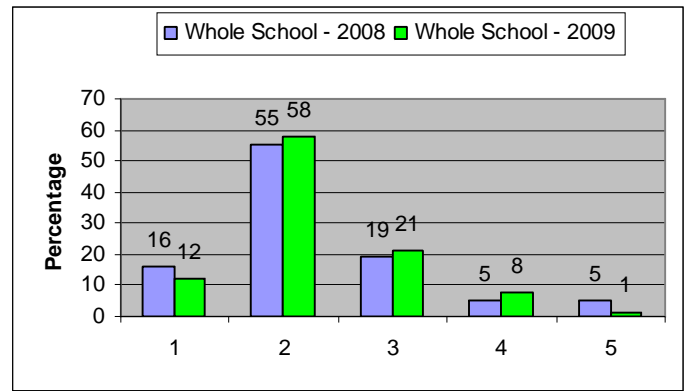
My daughter is provided with adequate feedback to help her to improve her own standard of work

2008—88% of parents answered 3 or above
2009—92% of parents answered 3 or above



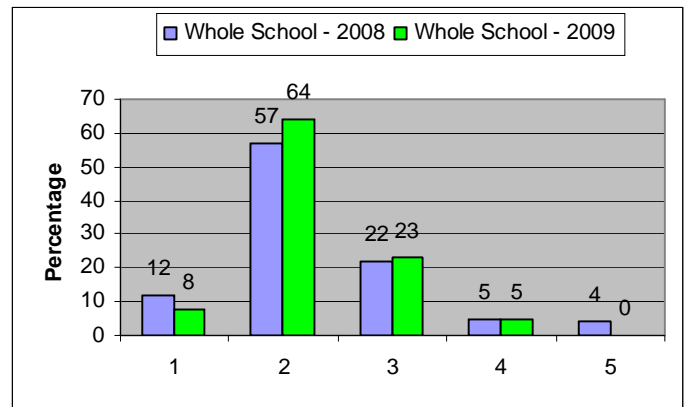
Parent Consultation Evenings are well organised and informative

2008—90% of parents answered 3 or above
2009—91% of parents answered 3 or above



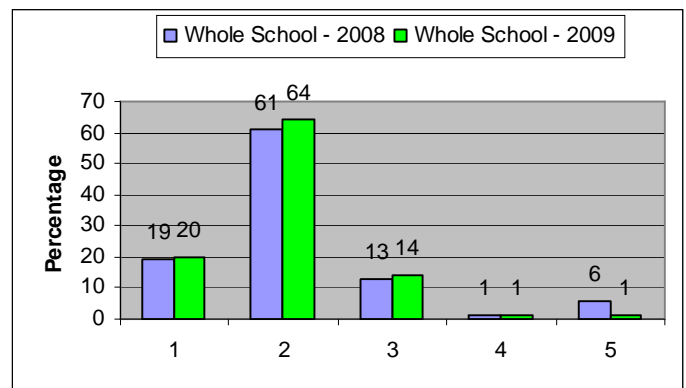
Behaviour at Glenmoor is generally of a good standard

2008—91% of parents answered 3 or above
2009—95% of parents answered 3 or above



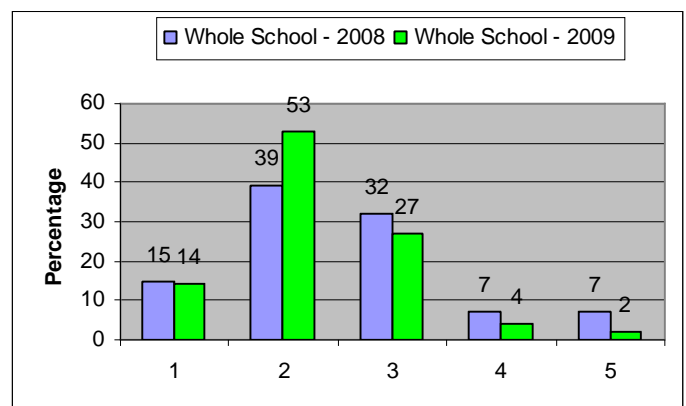
I feel my daughter is well cared for at Glenmoor

2008—93% of parents answered 3 or above
2009—98% of parents answered 3 or above



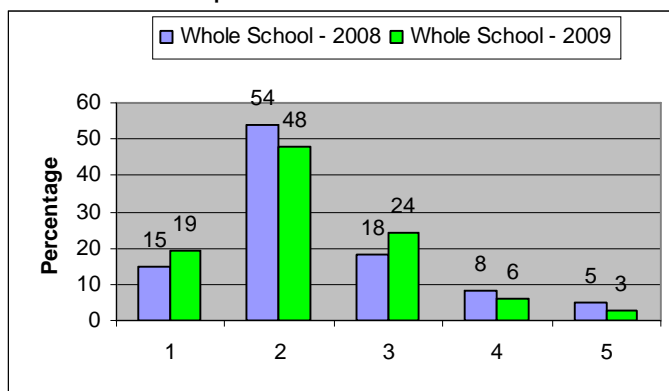
Incidents of bullying are dealt with effectively

2008—86% of parents answered 3 or above
2009—94% of parents answered 3 or above



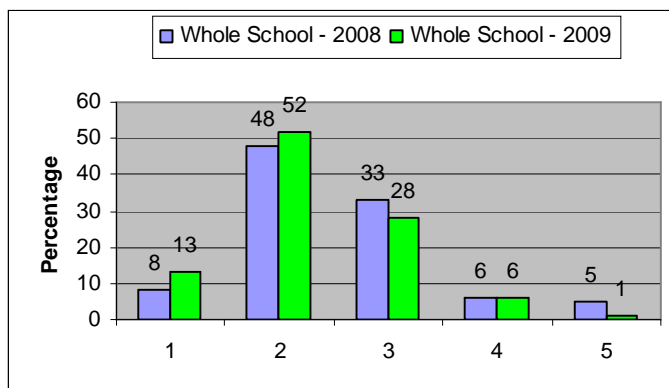
The school communicates effectively with parents

2008—87% of parents answered 3 or above
2009—91% of parents answered 3 or above



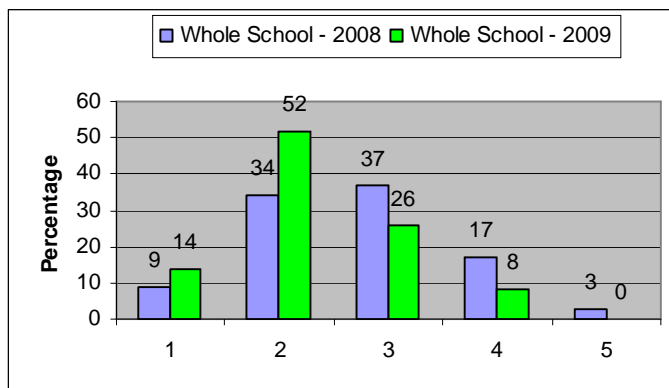
The school takes account of pupil's views

2008—89% of parents answered 3 or above
2009—93% of parents answered 3 or above



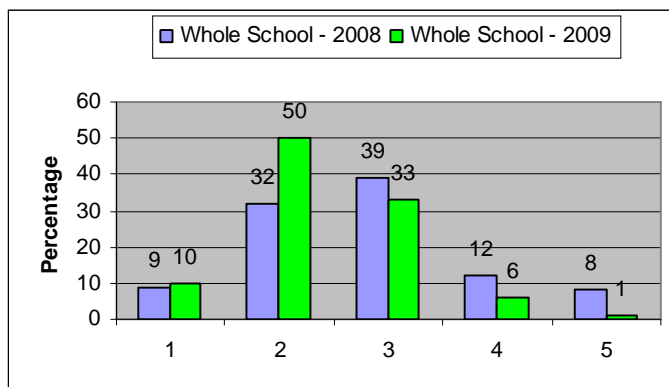
The canteen offers a wide choice of healthy food

2008—80% of parents answered 3 or above
2009—92% of parents answered 3 or above



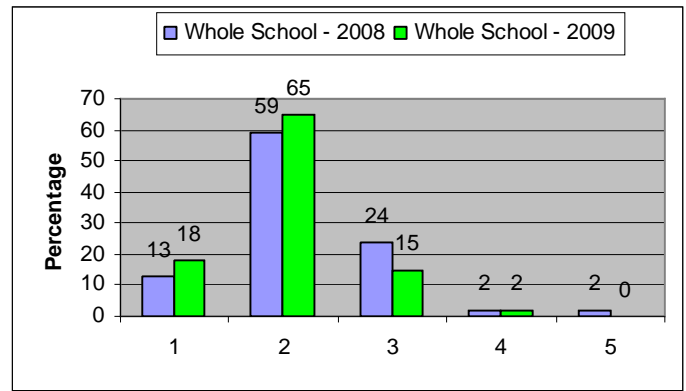
The school has a good reputation in the local community

2008—80% of parents answered 3 or above
2009—93% of parents answered 3 or above



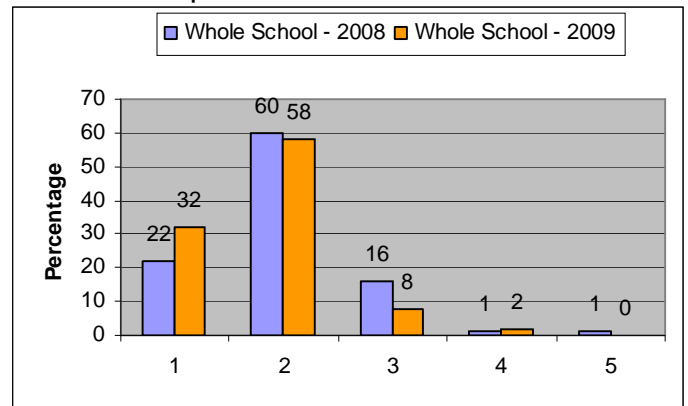
The school is well led and managed

2008—96% of parents answered 3 or above
2009—98% of parents answered 3 or above



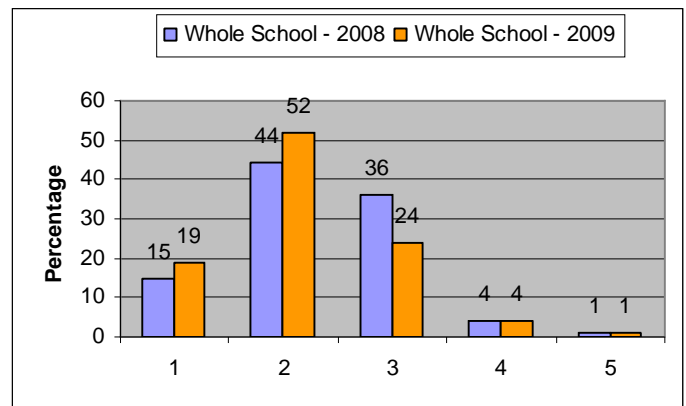
My daughter has the opportunity to participate in a range of extra curricular activities

2008—% of parents answered 3 or above
2009—% of parents answered 3 or above



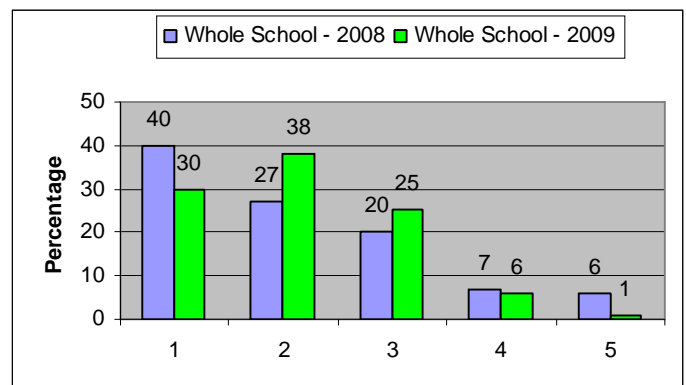
The school actively encourages pupils to make a positive contribution to the wider community and society

2008—95% of parents answered 3 or above
2009—95% of parents answered 3 or above



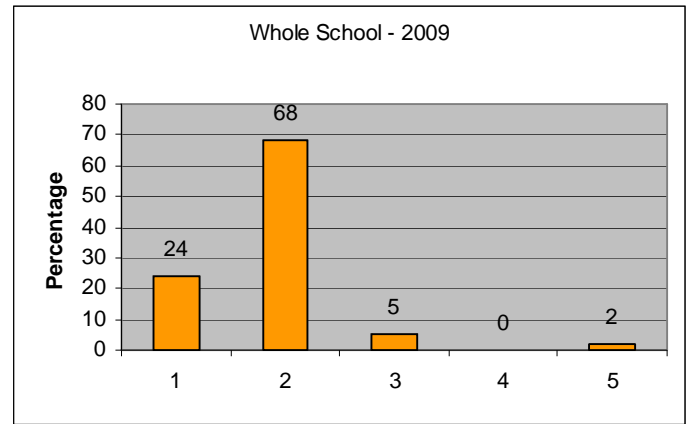
If it were possible I would rather my daughter had the opportunity to continue her education at Glenmoor rather than transfer to another school or college at age 16

2008—87% of parents answered 3 or above
2009—93% of parents answered 3 or above



My daughter was offered a suitable range of options to study in Yr 10 & 11 to enable her to meet her aspirations

2009—98% of parents answered 3 or above



My daughter was given effective support and advice to help her make the right choice of options

2009—91% of parents answered 3 or above

